

Cultural Design with History in Mind

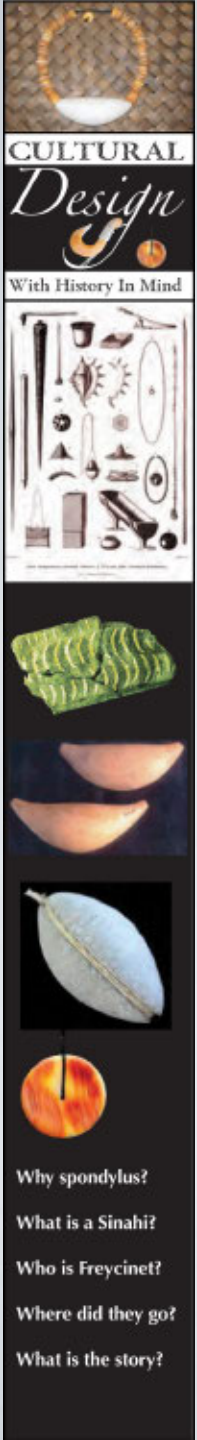
Tuesday, February 12, 2013
12:00 pm - 4:00 pm
Latte of Freedom, Adelup

Adzes, Fishing Tools, Beads and Bracelets Shell and Bone Artifacts from the Mariana Islands

A presentation by

Judith R. Amesbury

Sponsored by:



ADZES, FISHING GEAR, BEADS AND BRACELETS

SHELL AND BONE ARTIFACTS
FROM THE MARIANA ISLANDS

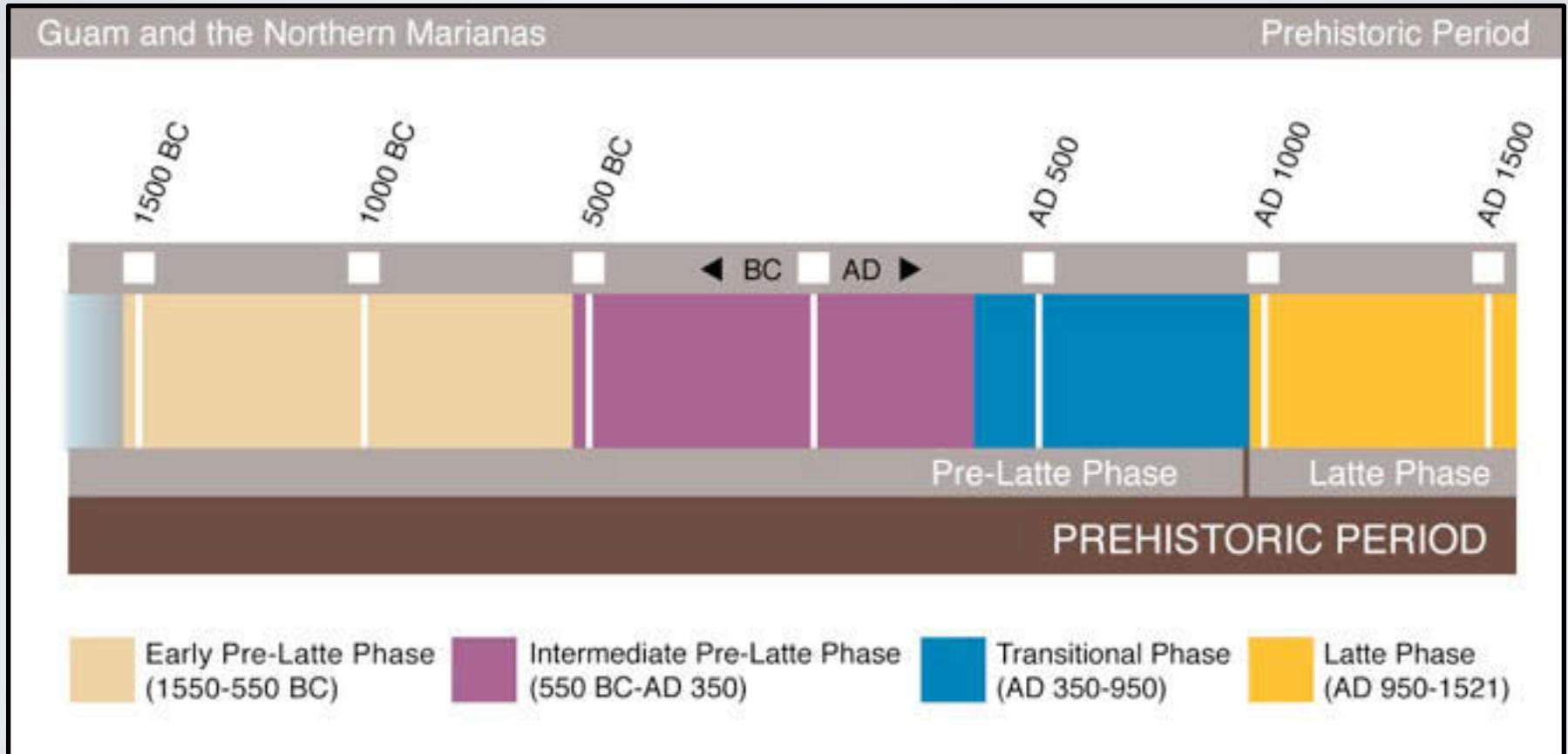
JUDITH R. AMESBURY

Micronesian Archaeological Research Services

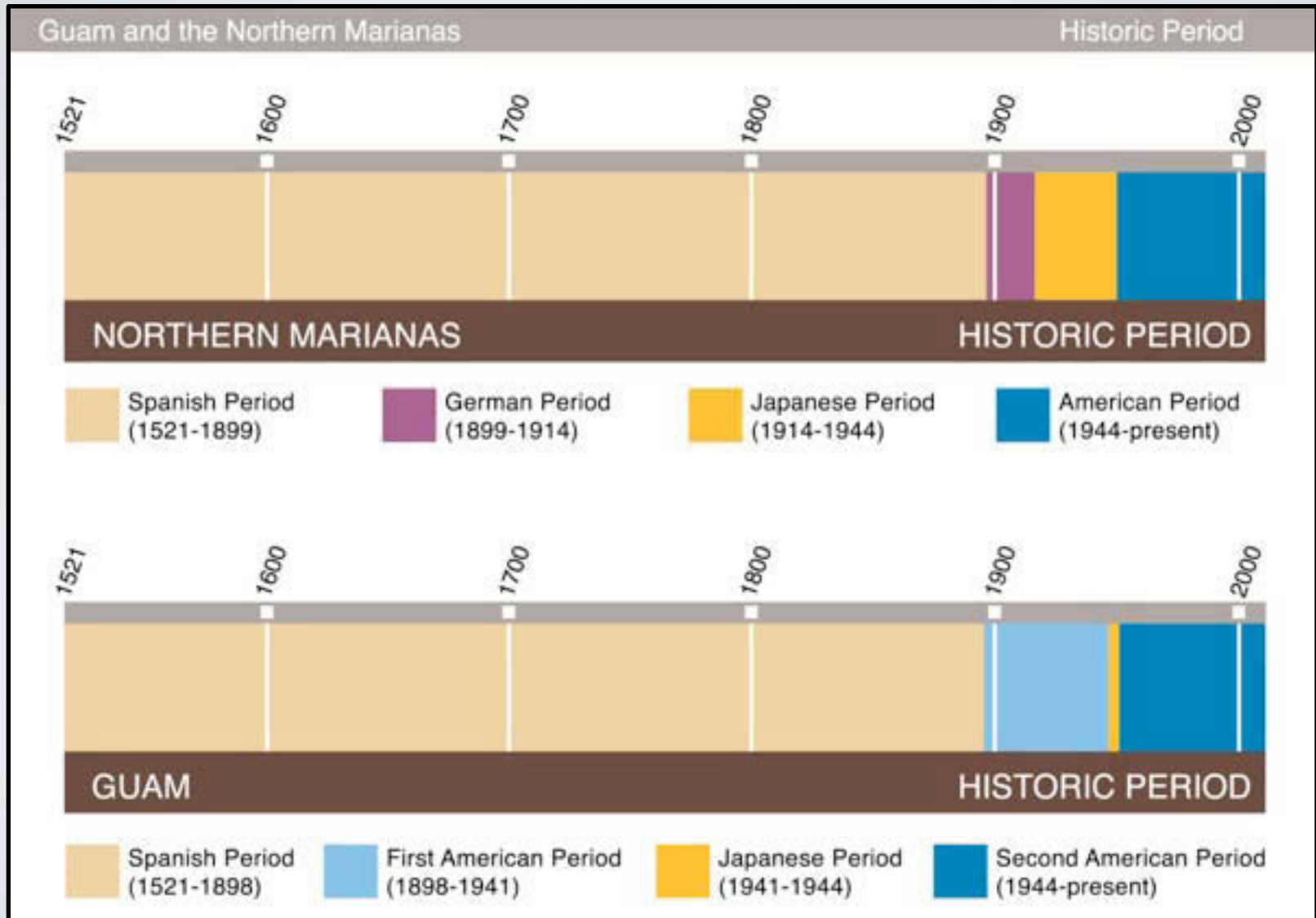
AN EASY WAY TO REMEMBER TIME PERIODS IN GUAM'S PREHISTORY AND HISTORY

| Period | Dates | Length |
|----------------------------|--------------------------------|-----------------------|
| Prehistoric or Pre-Contact | By at least 1500 BC to AD 1521 | More than 3,000 years |
| Spanish | 1521-1898 | More than 300 years |
| First American | 1898-1941 | |
| World War II or Japanese | 1941-1944 | Less than 3 years |
| Second American | 1944-present | |

TIMELINE OF THE PREHISTORIC PERIOD



TIMELINES OF THE HISTORIC PERIOD



ADZES

- Adzes are woodworking tools. We don't find the shafts, but we find the blades.
- Most adze blades were made of *hima*, the giant clam, *Tridacna*.
- Some adzes were made of *Terebra* or *Lambis* shells.

Typical *Tridacna*
adze blade



TEREBRA ADZES



LAMBIS ADZE

(blade end to right)



LAMBIS PROJECTION TOOL



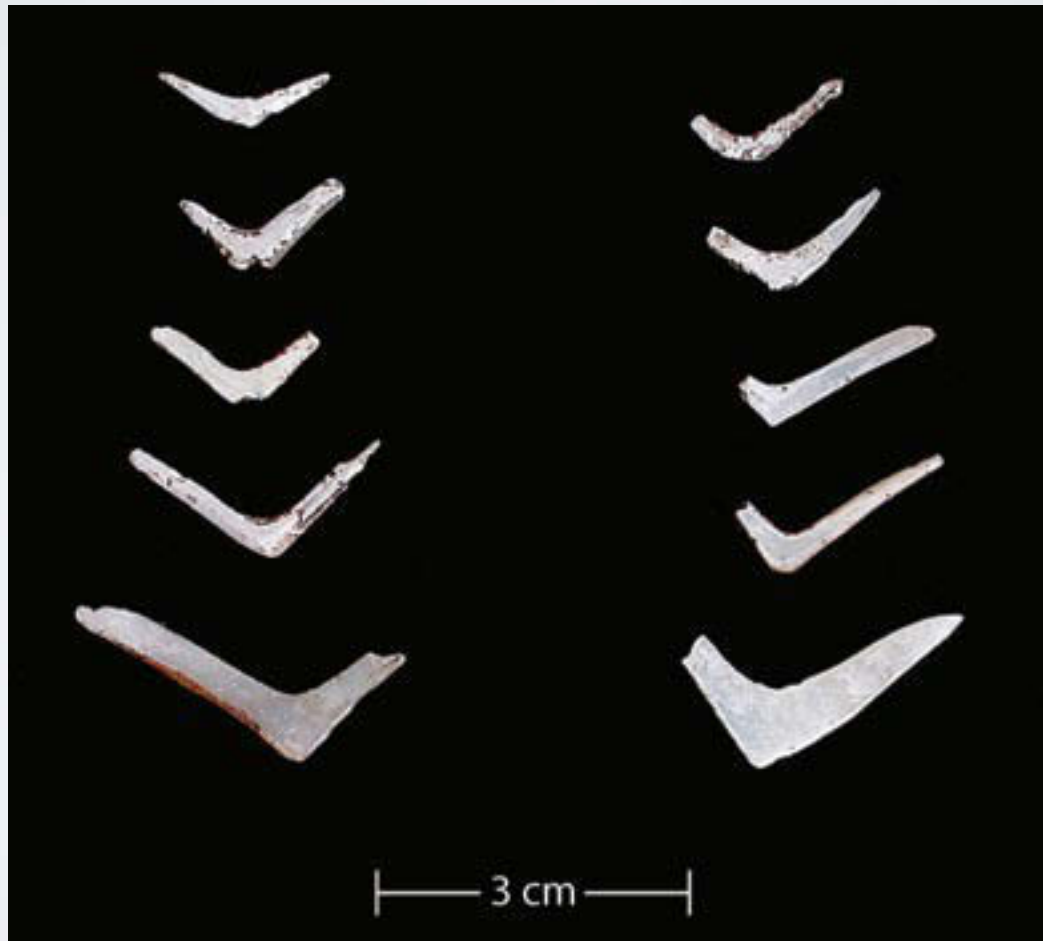
FISHING GEAR

- Fishhooks were made of shell and bone.
- Gorges are two-pronged hooks.
- The fishing line and nets were made of plant materials that do not last.
- Other types of fishing gear include sinkers, harpoons, and chumming devices.

J-SHAPED FISHHOOKS MADE OF *ISOGNOMON* SHELL

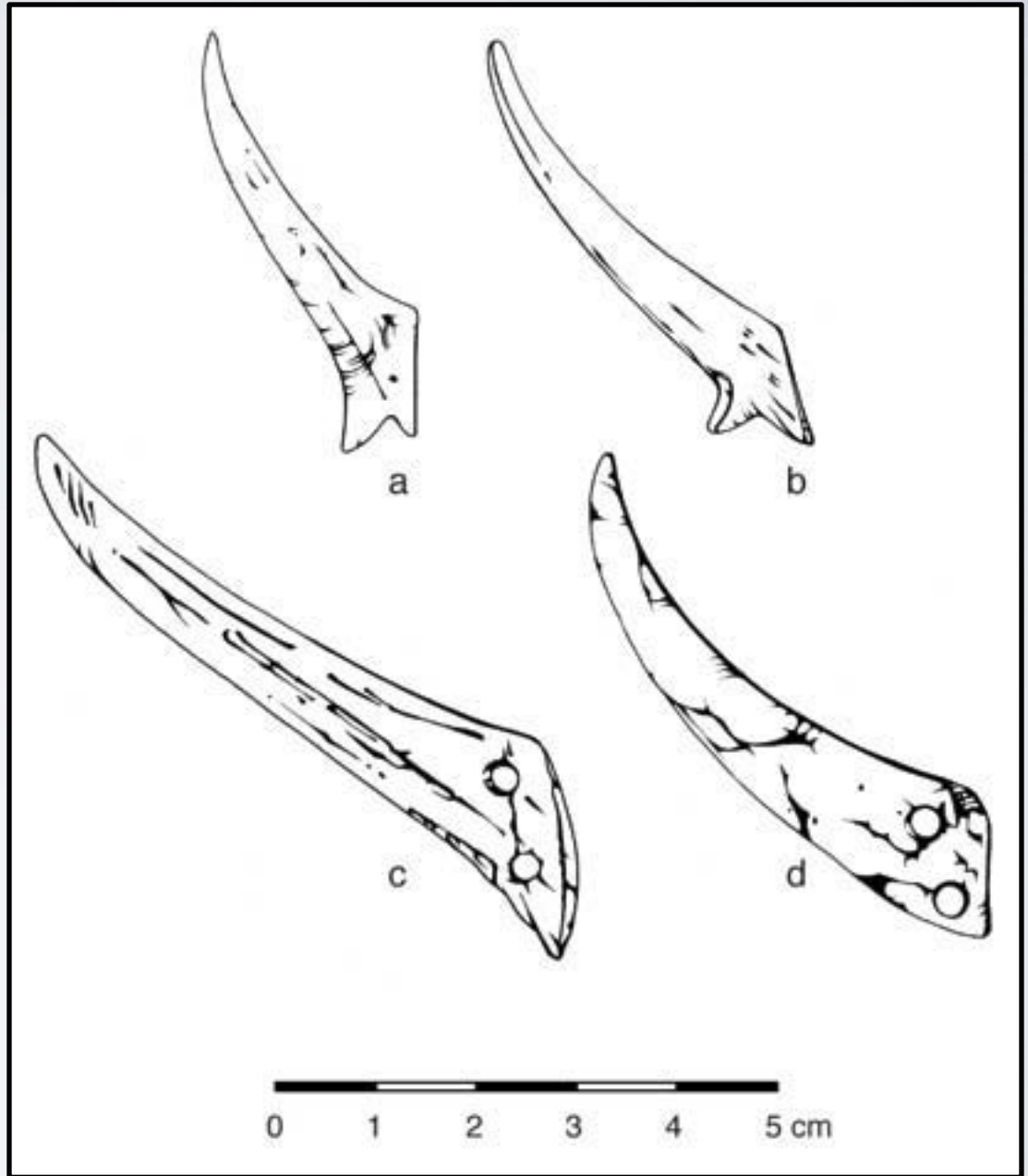


V-SHAPED GORGES MADE OF *ISOGNOMON* SHELL



Points of composite fishhooks

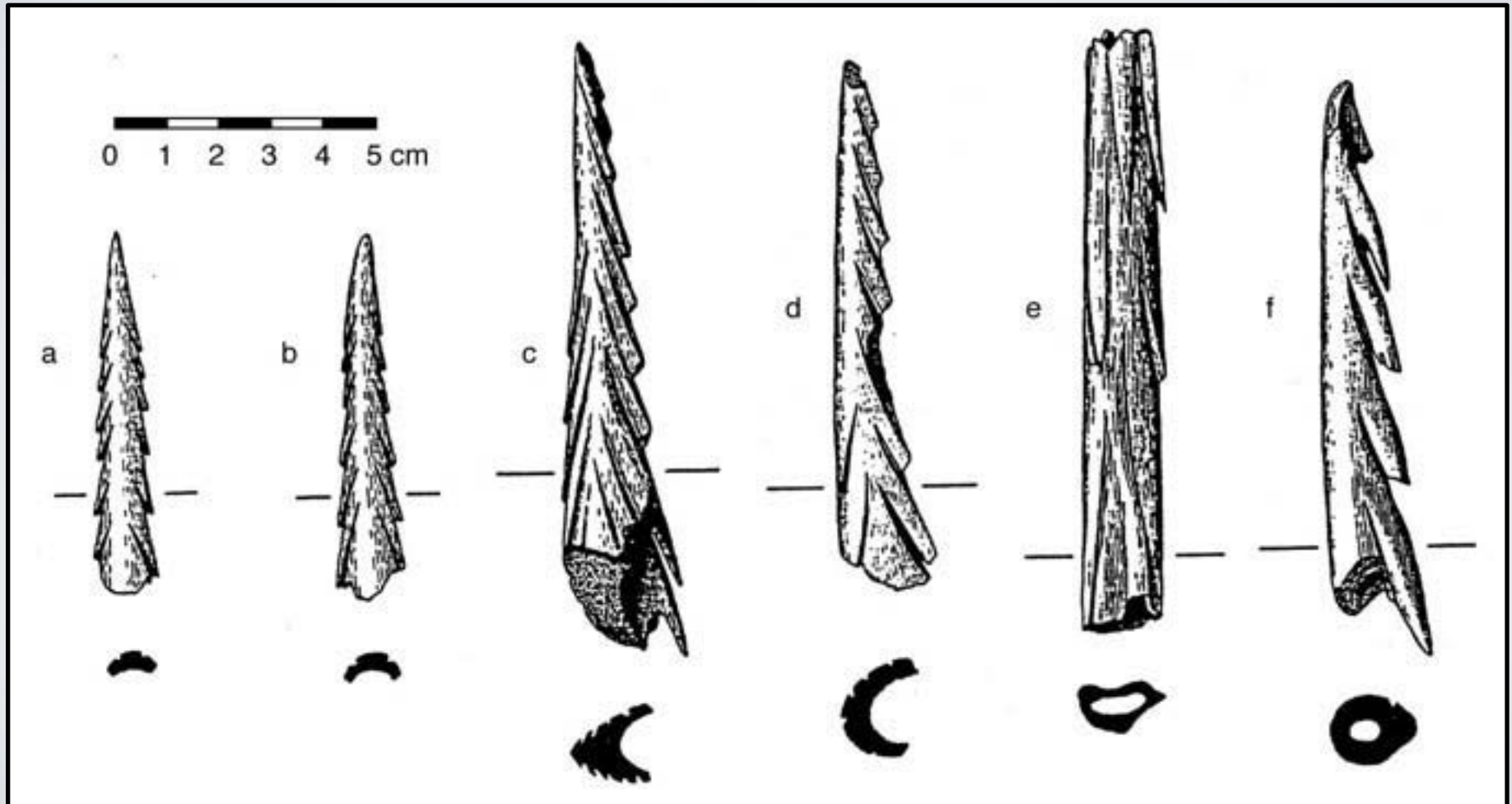
- a, b, and c are made of bone.
- d is made of shell.



Human bone point of
composite fishhook



HARPOON OR SPEAR POINTS MADE OF HUMAN BONE



THE *POIO* OR FISHING STONE USED TO FISH FOR *ACHUMAN*



ITEMS OF ADORNMENT

- Items of adornment, such as beads and bracelets, were probably indicators of status or wealth.
- Both men and women wore beads and bracelets, but more women than men did.
- There was a change in the preferred shell during the Prehistoric Period from cone shell to Spondylus.

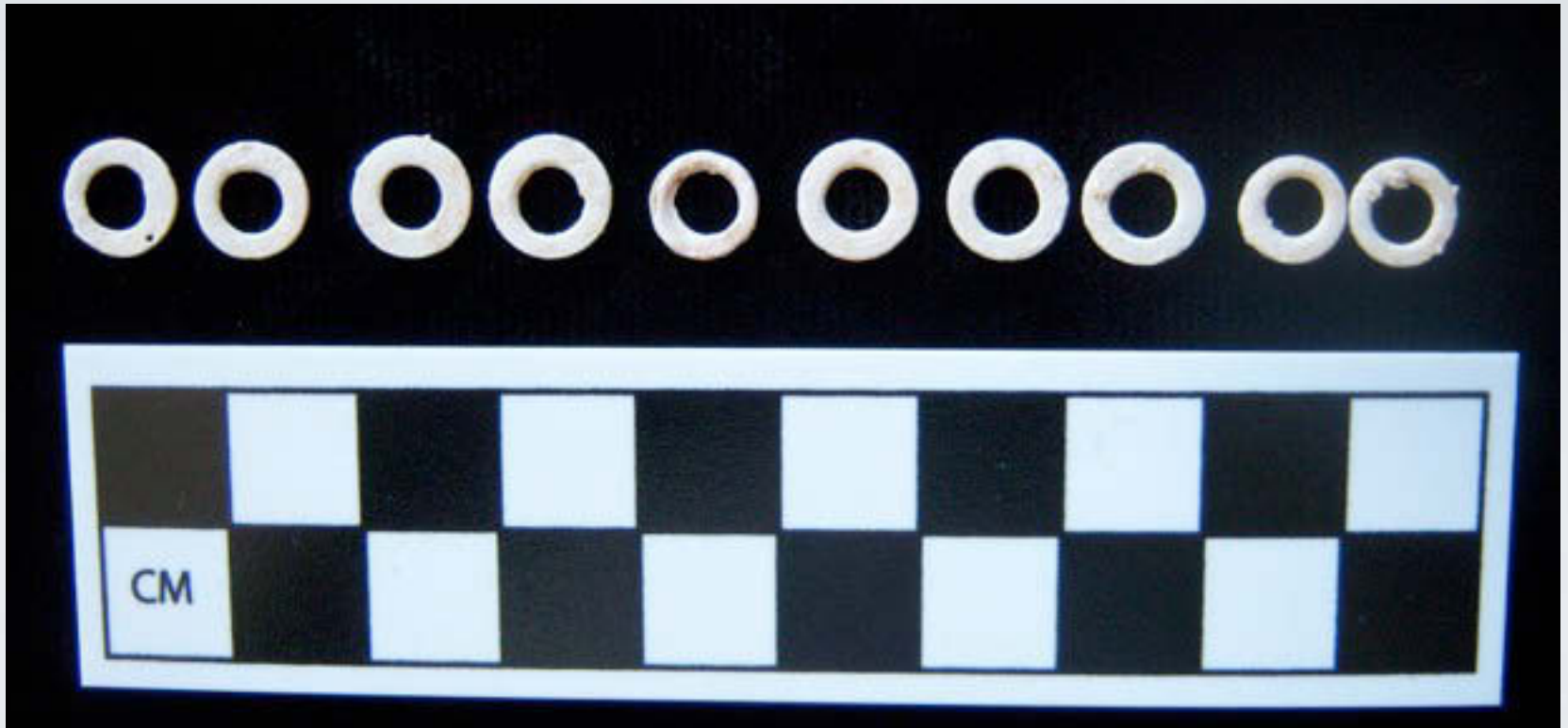
TYPE I *CONUS* BEADS (PRE-LATTE)



TYPE 2 *CONUS* BEADS (PRE-LATTE)



TYPE 3 *CONUS* BEADS (PRE-LATTE)



CYPRAEA BEADS (PRE-LATTE)



SHELL BRACELETS

(PRE-LATTE)



SPONDYLUS BEADS (LATTE OR PROTOHISTORIC)



TYPE 4 *CONUS* BEADS (LATTE)



SI YU'OS MA'ÅSE'

To cite this presentation:

Amesbury, Judith R. 2013. Adzes, Fishing Gear, Beads and Bracelets: Shell and Bone Artifacts of the Mariana Islands. Presentation given to the “Cultural Design with History in Mind” workshop, Adelup, Guam, February 12, 2013.

Slide 2. MARS table by Judith R. Amesbury.

Slides 3, 4. MARS figures by Robert Amesbury.

Slides 6, 11, 12, 16. MARS photos by Frank Wells.

Slides 7 (left), 14. MARS photos by Rick Schaefer.

Slide 13. Figure from Olmo et al. (2000).

Slide 15. Figure from McGovern-Wilson (1989).

Slides 8, 9, 18-24. MARS photos by Judith R. Amesbury.



CULTURAL

Design

With History In Mind

